

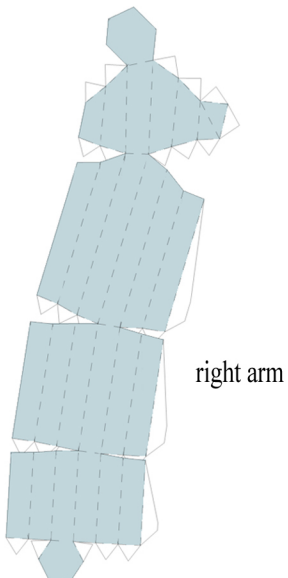
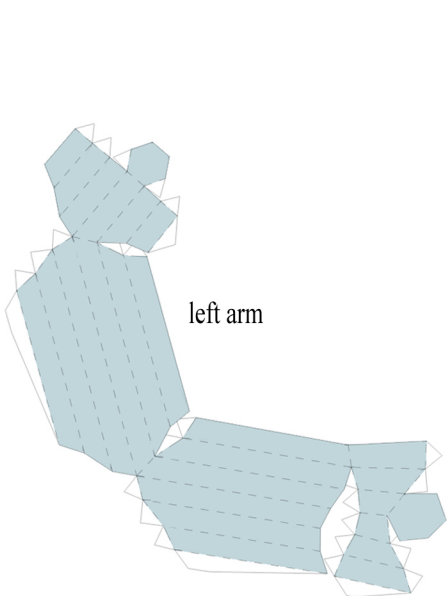
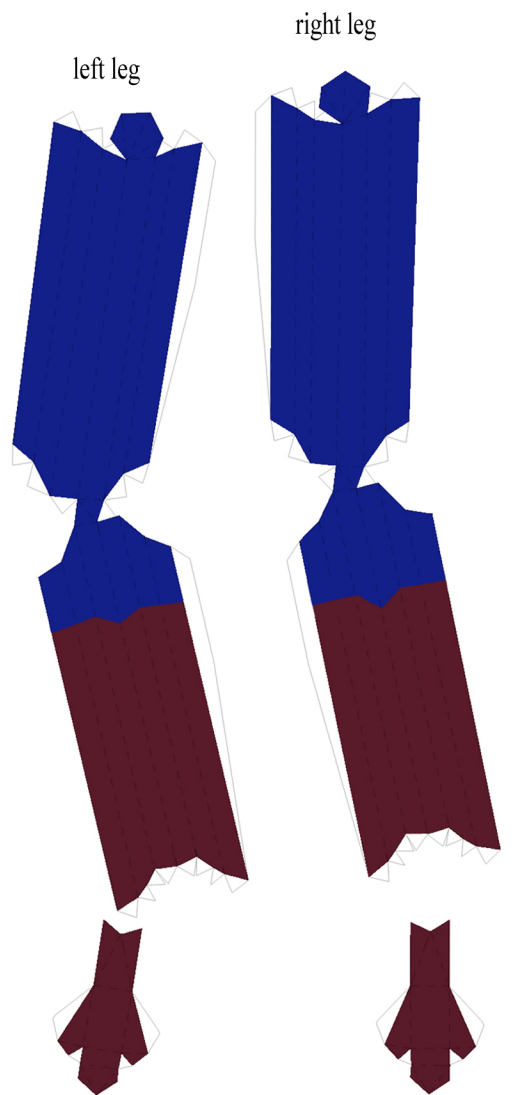
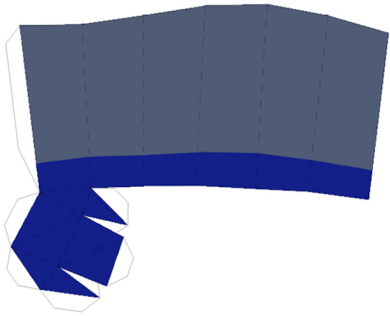
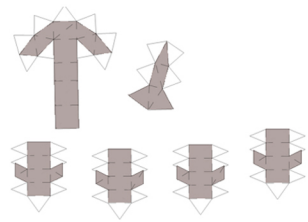
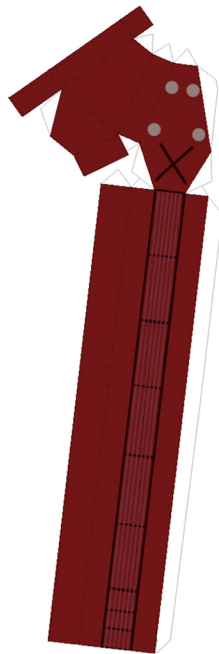
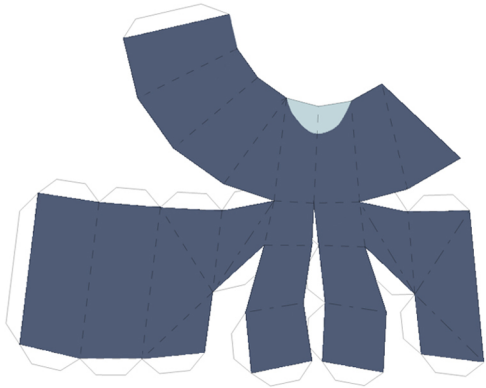
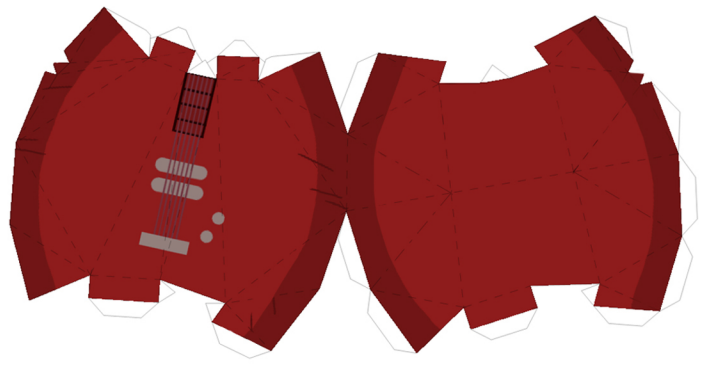
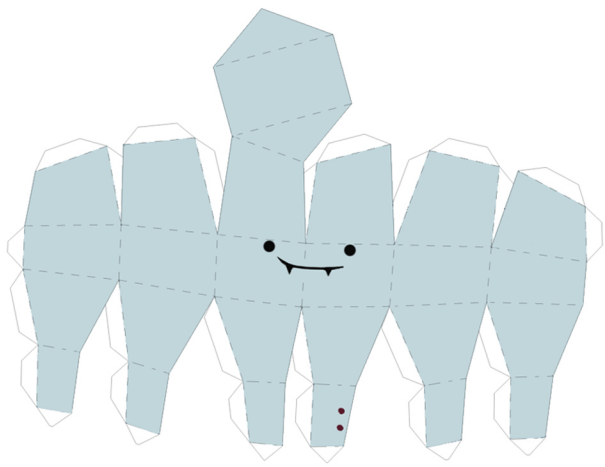
ADVENTURE TIME



Marceline



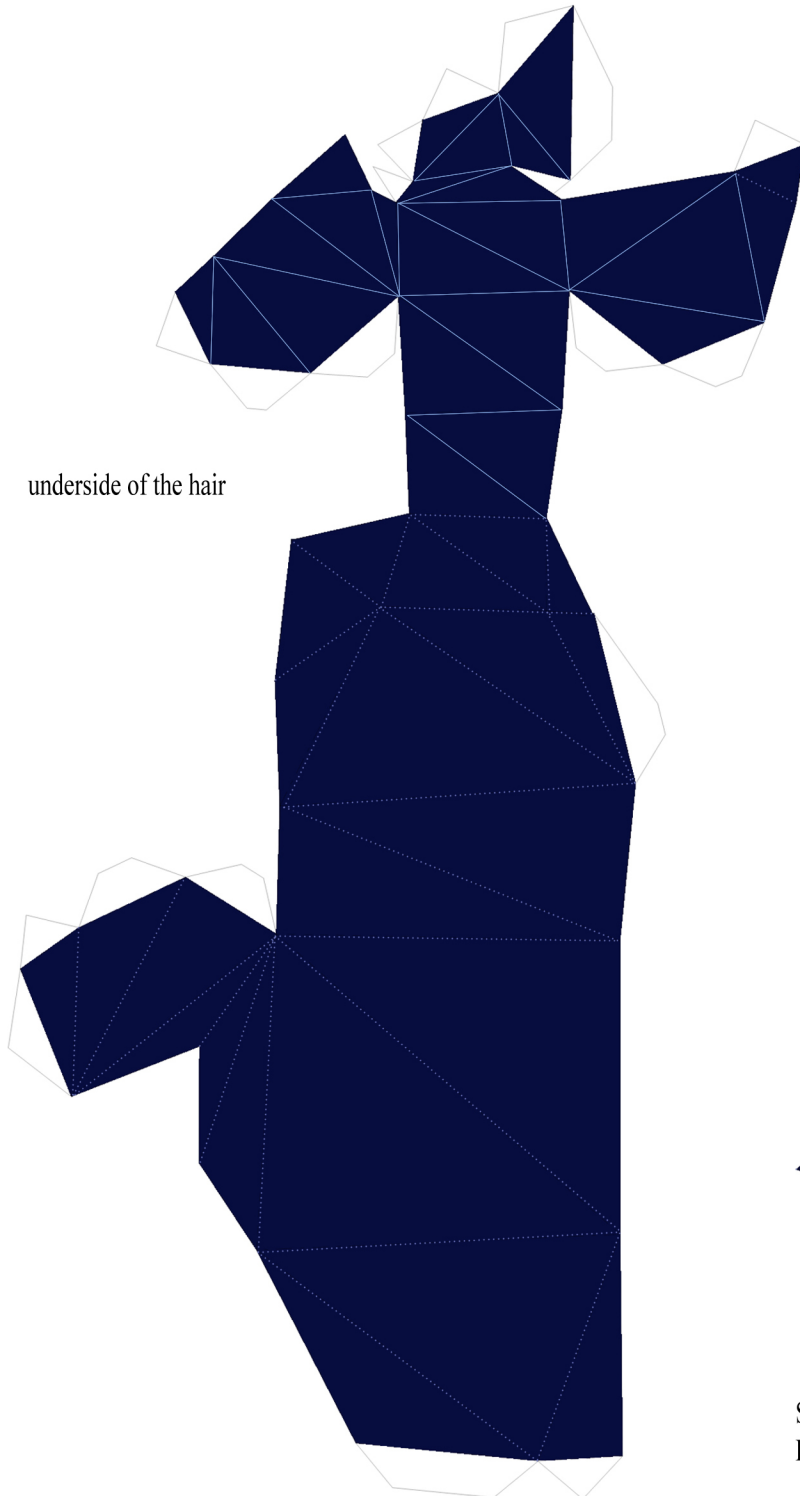
This model was made by Emily McLain
<http://be.net/EmilyMcLain>
emclainable@gmail.com



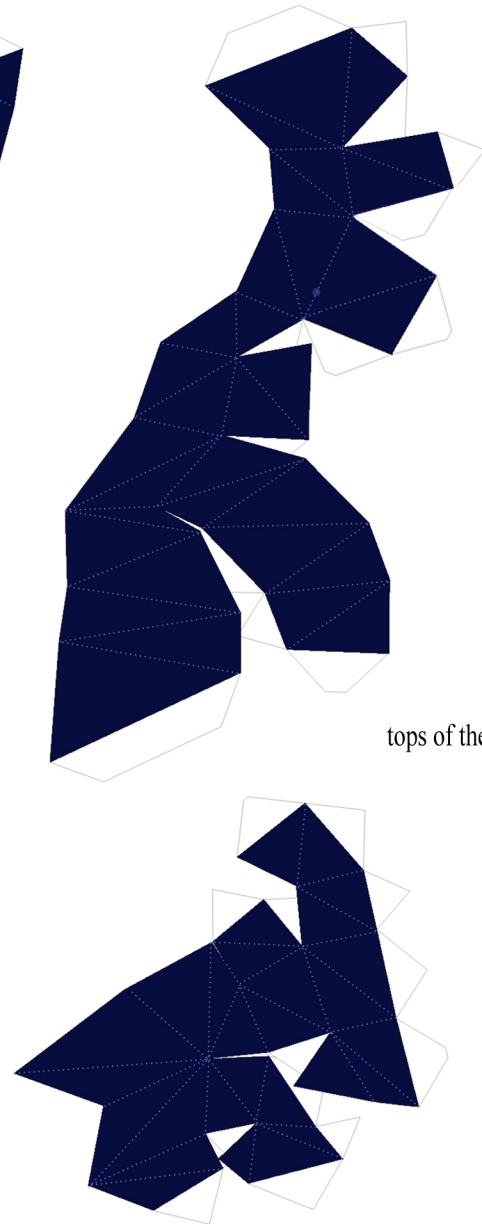
The hair is designed to be a closed piece separate from the body. The head will fit snug in it, requiring only the top of the head to be glued to the very top of the hair's underside.

If you wish to hang Marceline up by string, poke a hole through the pattern with a needle, where indicated. Using a sufficiently long piece of string, tie a knot at one end and feed it through the hole. Make sure to do this BEFORE gluing the pieces together.

underside of the hair

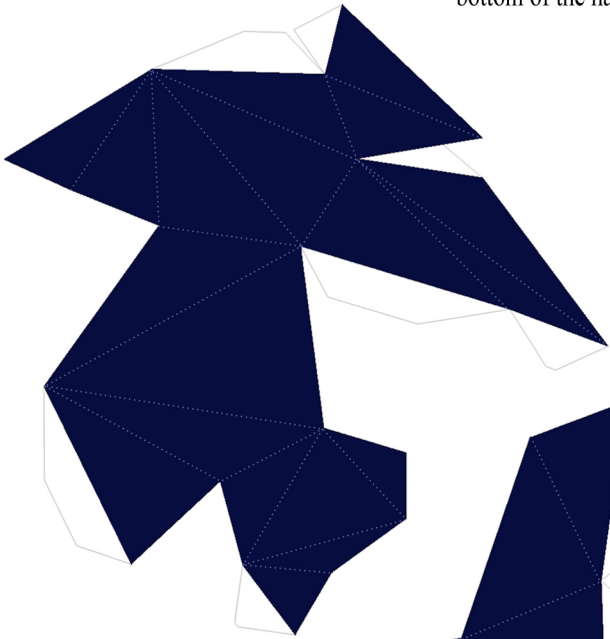


tops of the hair

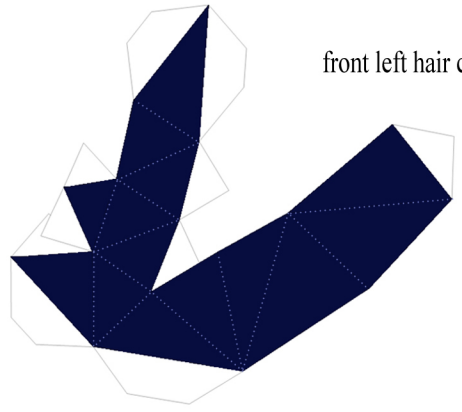


Straight lines are *valley folds*, which fold in on themselves. Dotted lines are *mountain folds*, which fold outward.

bottom of the hair



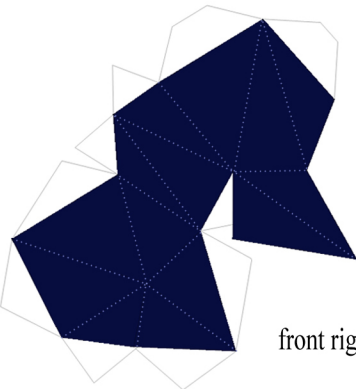
front left hair clump

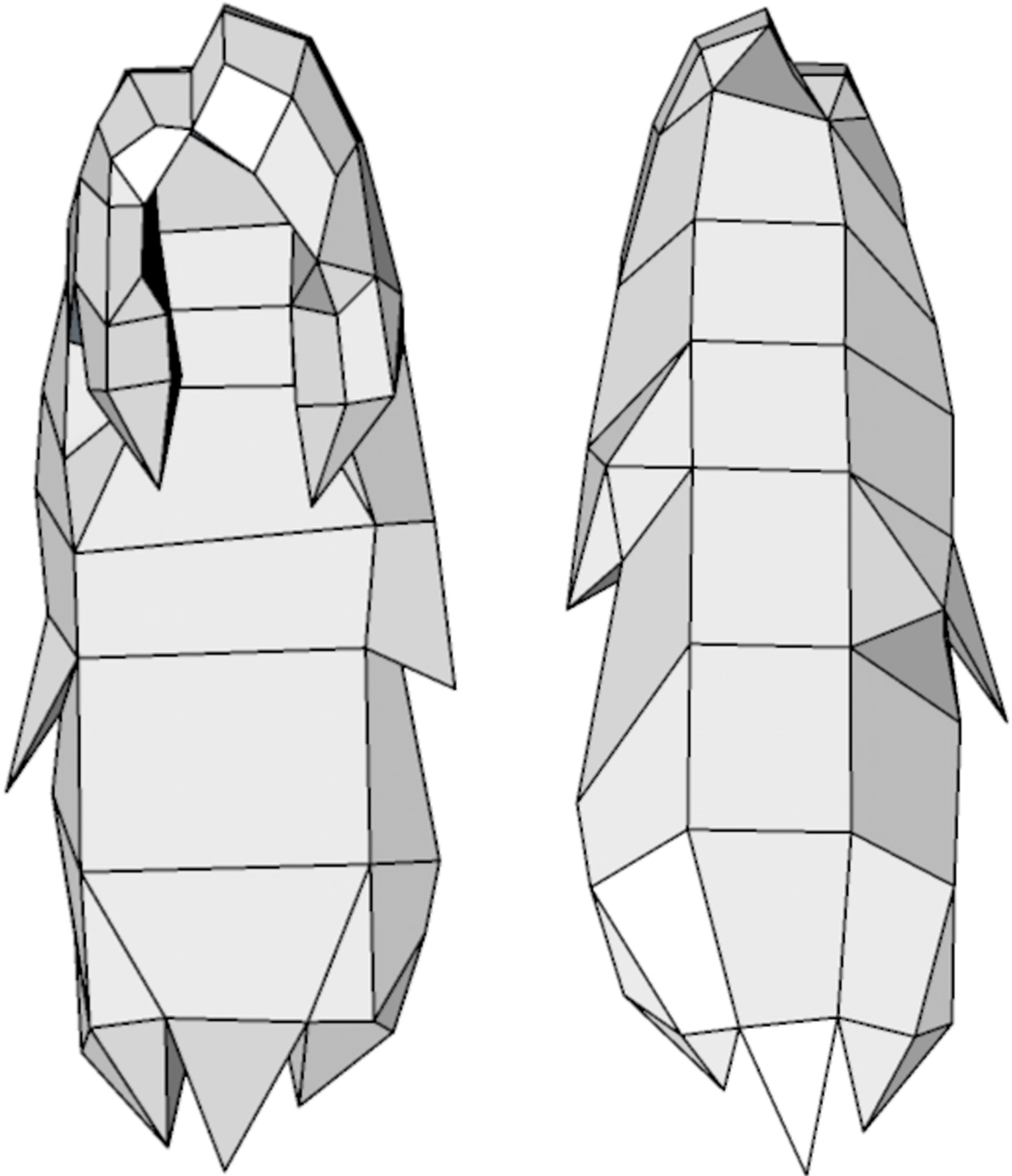


backside of hair



front right hair clump





the hair piece, separate from the body